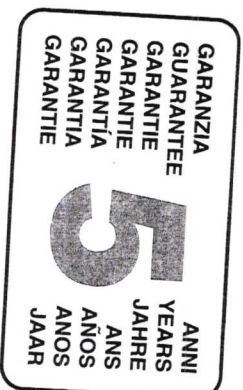




EMMEVI
RUBINETTERIE S.r.l.

ISTRUZIONI PER L'USO
INSTRUCTIONS FOR THE USE
GEBRAUCHANWEISUNG
MODE D'EMPLOIE
INSTRUCCIONES PARA EL USO
INSTRUÇÕES PARA O USO
GEBRUIKSAANWIJZINGEN



MISCELATORE MONOCOMANDO A DISCHI CERAMICI
SINGLE LEVER MIXER WITH CERAMIC DISKS
EINHEBEL-MISCHER MIT KERAMIKSCHEIBEN
MITTIGEUR MONOCOMAND AVEC DISC CERAMIC
MEZCLADOR MONOMANDO
MISTURADOR MONO COMANDO
EENBESTURINGSMENGGKRANEN



EMMEVI
RUBINETTERIE S.r.l.

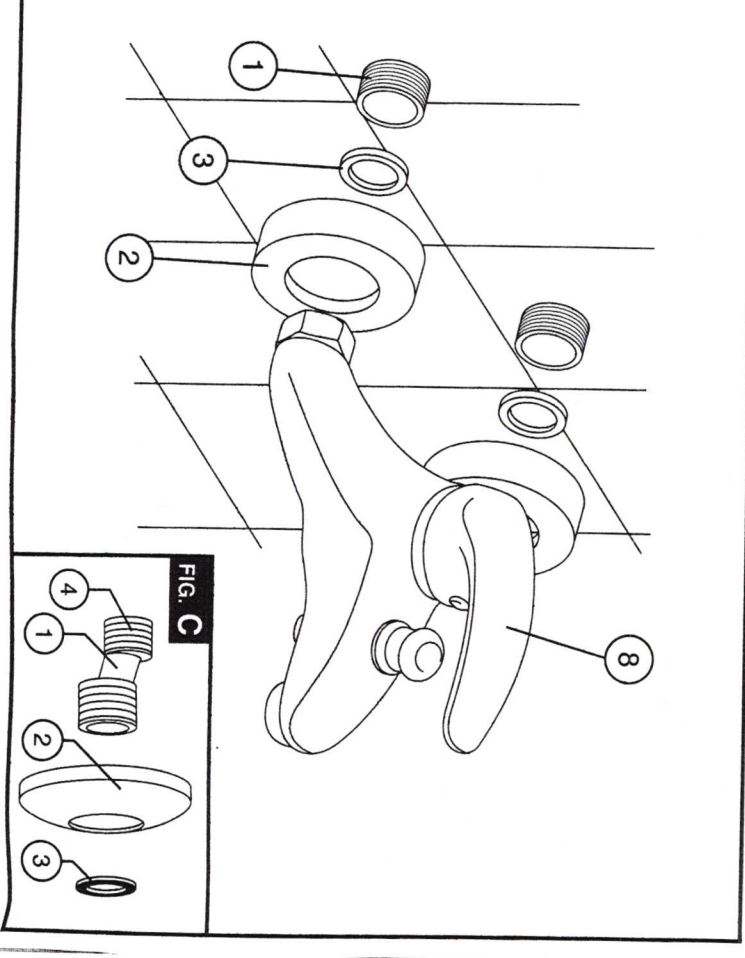
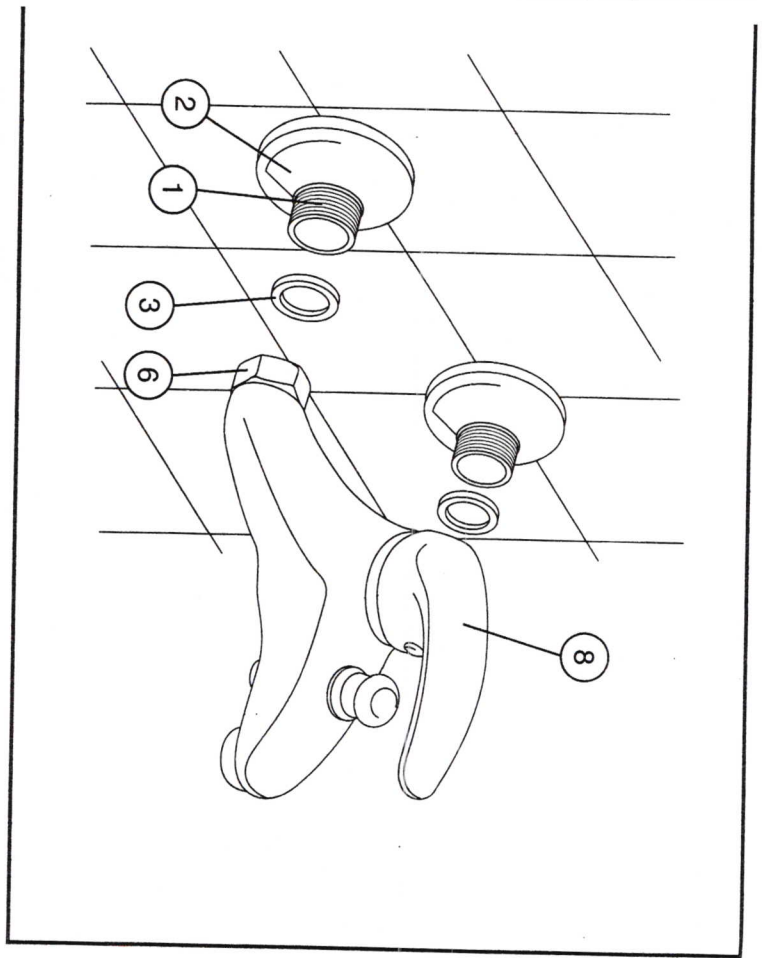


FIG. C

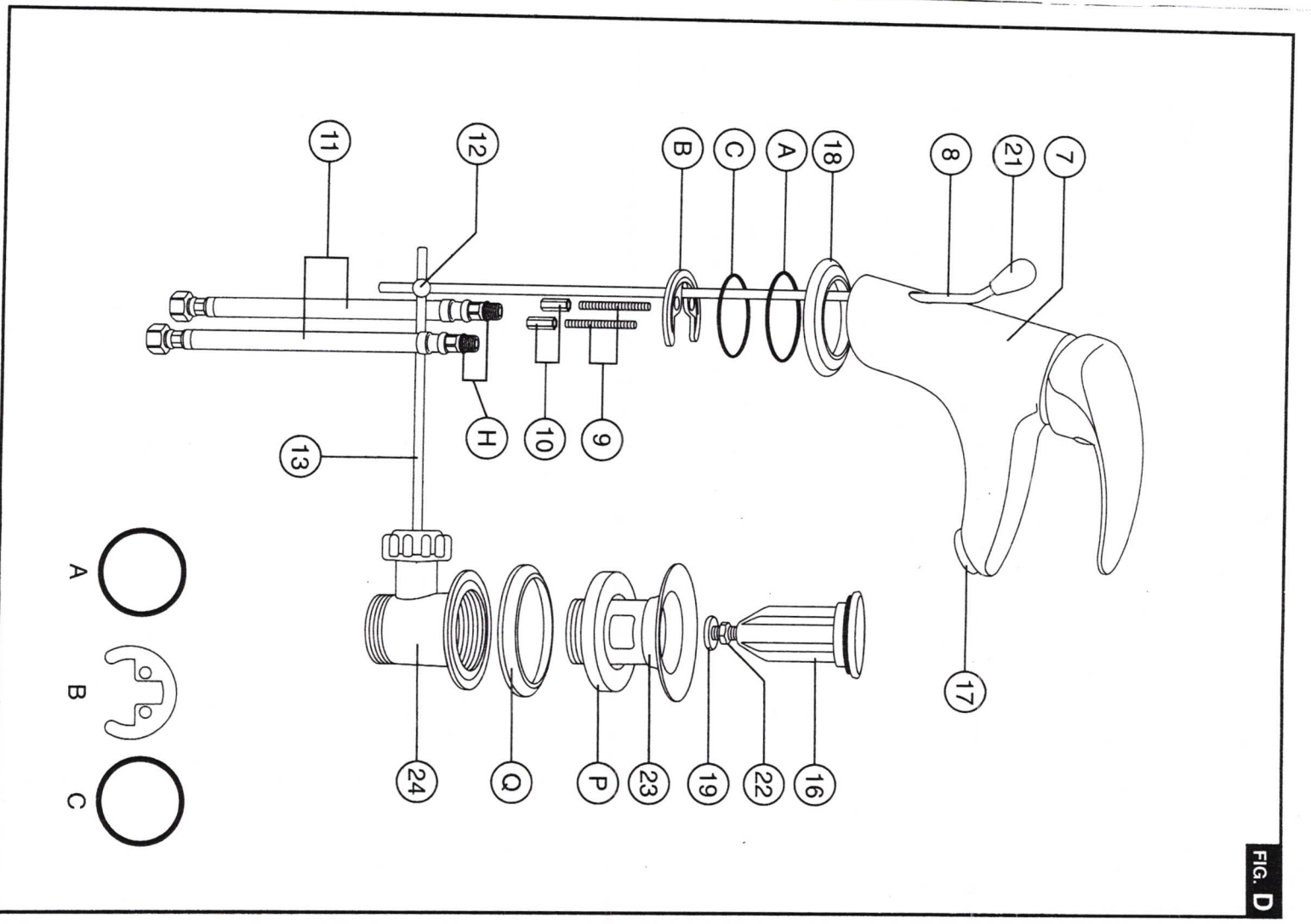


FIG. D

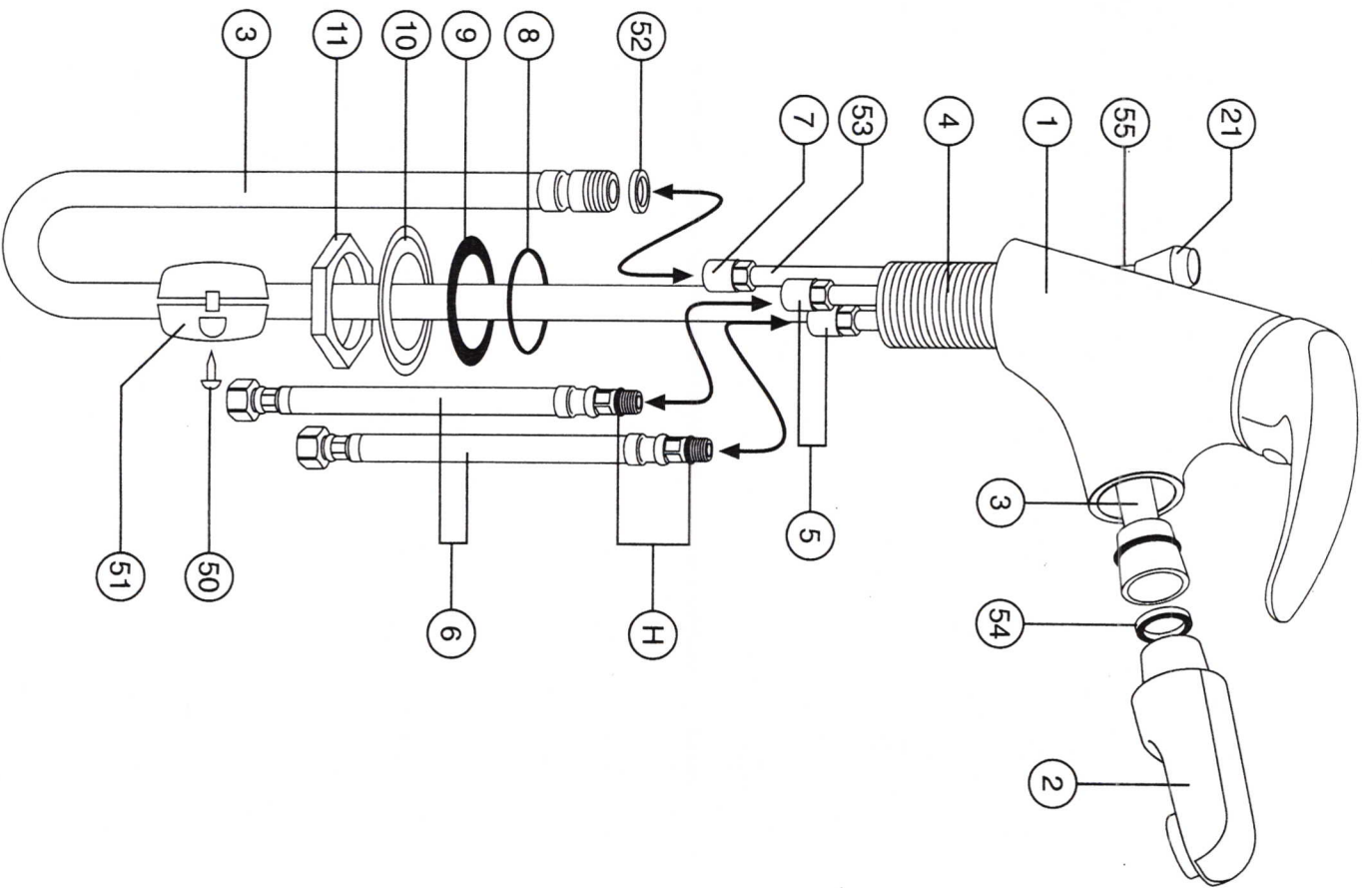
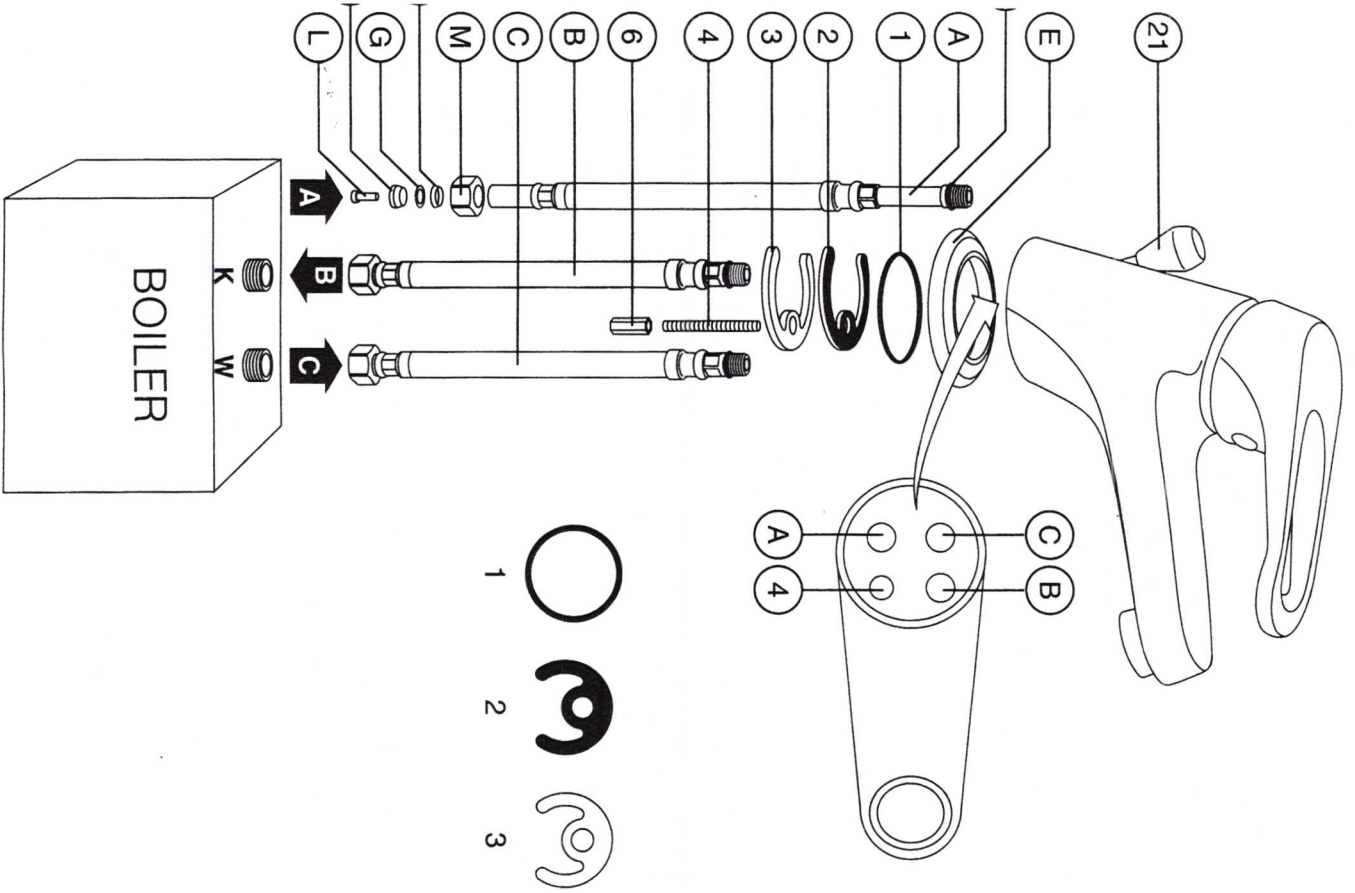


FIG. F

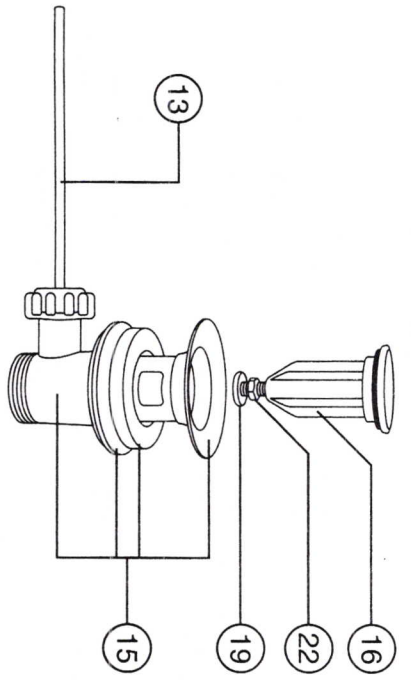


FIG. I

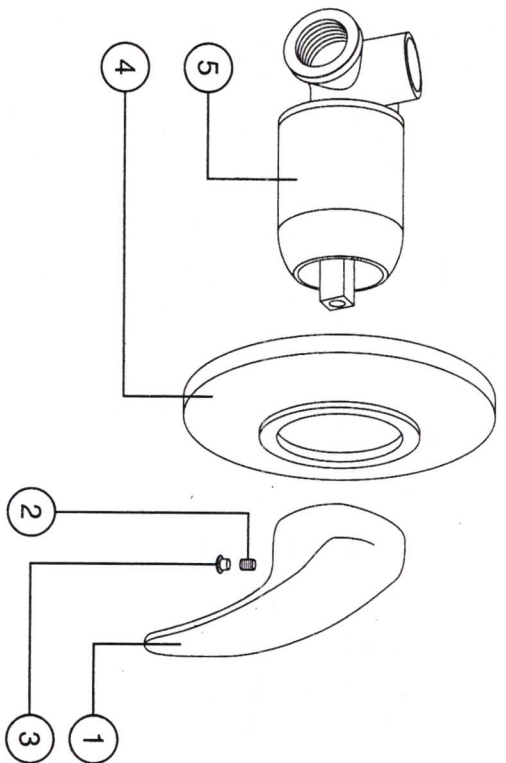
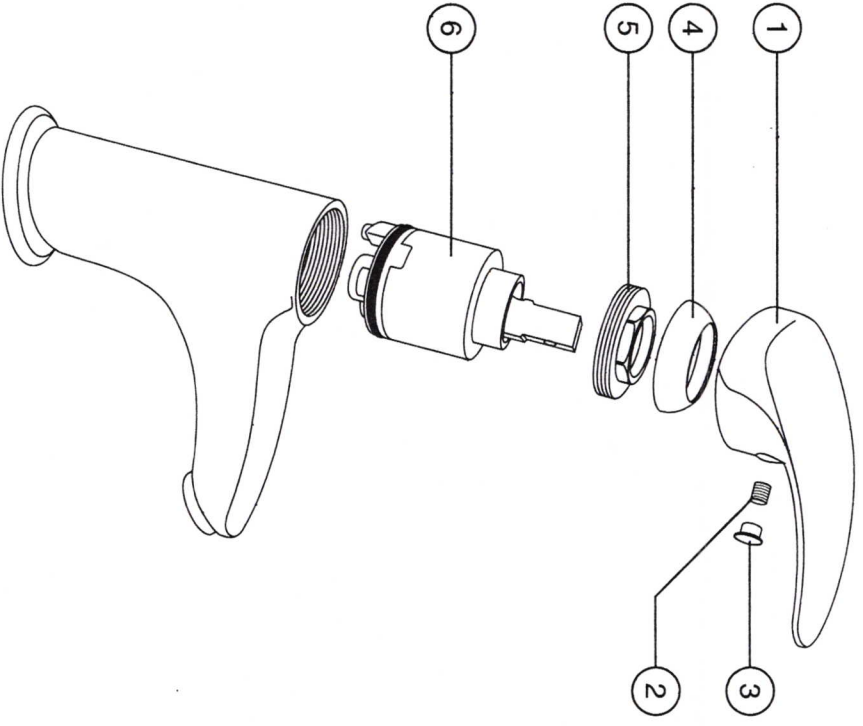
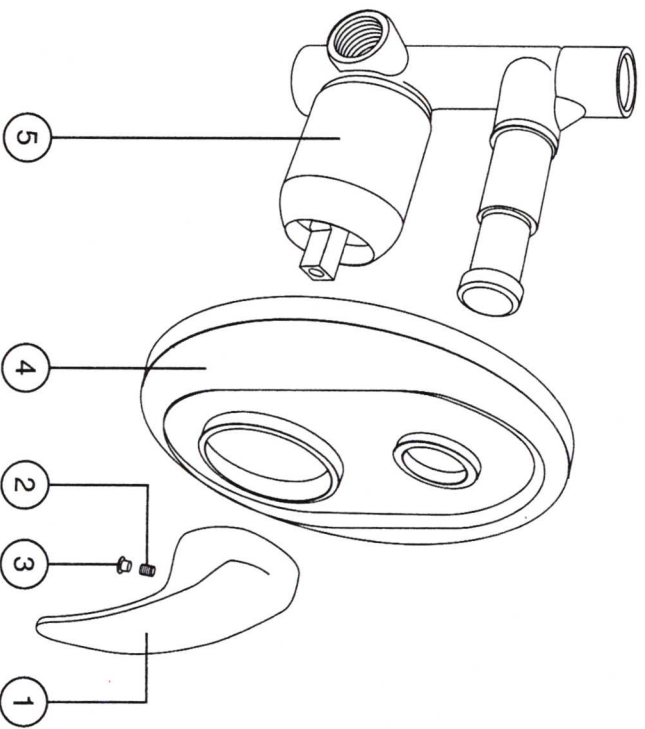


FIG. L



1) to have chosen an Emmevi product!
2) of raw materials, the right selection of all the components and the strict quality-tests, allow our products to last during time.
3) to maintain the quality of your Emmevi mixer.

H MIXER – Pictures A, B, C

ater's general valve.

1) eccentric n° 1 to the hydraulic system, winding the part n° 4 with seal material (ex. hemp, teflon, ect.)
2) rosette n° 2 in to the eccentric n° 1 (see picture A) or fit in the rosette n° 2 in the bath mixer (see picture B), depending on the
3) gasket n° 3 in the hexagonal cap n° 6 and screw the mixer into the eccentrics.

ater's general valve and check the seal of the eccentrics.

working of the mixer, operating the lever n° 8 up, there is the opening of the mixer, operating the same lever down there's the
the mixer, moving it to the right (cold) and to the left (warm) there is the mixing.

working of the diverter, operating the knob up you close the water of the bath and you send it to the shower. When closing the
water goes automatically to the original position. If the pressure of the water is not enough to keep the diverter up, then move
up and turn it clockwise. To release it continue to turn clockwise.

2) disassemble the aerator before proceeding to the seal's test of the mixer. Let flow a good quantity of water to expel the eventual
which otherwise would choke the aerator.

JWER MIXER – Pictures A, B, C

ater's general valve.

3) eccentric n° 1 to the hydraulic system, winding the part n° 4 with seal material (ex. hemp, teflon, ect.)
2) rosette n° 2 into the eccentric n° 1 (see picture A) or fit in the rosette n° 2 in the bath mixer (see picture B), depending on the
3) gasket n° 3 in the hexagonal cap n° 6 and screw the mixer into the eccentrics.

ater's general valve and check the seal of the eccentrics.

working of the mixer, operating the lever n° 8 up, there is the opening of the mixer, operating the same lever down there's the
the mixer, moving it to the right (cold) and to the left (warm) there is the mixing.

MIXER – Pictures D, G

ater's general valve.

flexibles (or pipes) n° 11 into the mixer's body. Please take care that those flexibles are equipped with integral o-rings H.
stay-bar n° 9 into the right hole.

asket A at the bottom of the mixer and place the mixer on the right hole of the washbasin. In case of your mixer is equipped with
n the gasket A into the base and then place it at the bottom of the mixer.

ange B on the stay-bar n° 9, fit-in the gasket C in the same position and screw the nut n° 10 with a right key. Please check that
e wedge.

le waste n° 15 (see picture G) and place the part n° 23 (with the gasket P fitted as per the drawing) into the right hole of the
(from up). From down screw the part n° 24 (with the gasket O fitted as per the drawing). Place the plug n° 16 into the right hole
e the screw n° 19 in order to open and close the water in the washbasin. With the nut n° 22 block the screw n° 19.

op-up lever n° 8 into the right hole.

e pop-up lever n° 8 with the n° 13, with the junction n° 12. Regulate the pop-up lever n° 8 until when the knob n° 21 will be only
istant to the mixer's body. Please check that the pop-up lever n° 13 is completely turned to the floor, then screw the junction n° 12.
o connect the pop-up waste to the siphon. If it is not included in the box, it can be bought separately.

e flexible n° 11 to the stop-cocks with incorporated filter. If they're not included in the box, they can be bought separately.
ater's general valve.

o disassemble the aerator before proceeding to the seal's test of the mixer. Let flow a good quantity of water to expel the eventual
which otherwise would choke the aerator.

LOW PRESSURE – Pictures E, D, G

ater's general valve.

stay-bar n° 4 into the hole n° 4

flexible A into the hole A, the flexible B into the hole B and the flexible C into the hole C.
ck that all these flexibles are equipped with integral o-ring n° 5

asket n° 1 into the base E and place it at the bottom of the mixer. Place the mixer into the right hole of the washbasin. Place the
? on the stay-bar n° 4, fit-in the flange n° 3 and screw the nut n° 6 with a right key. Please check that it's well screwed.

RES D and G: unscrew the waste n° 15 and place the part n° 23 (with the gasket P fitted as per the drawing) into the right hole of
asin (from up). From down screw the part n° 24 (with the gasket O fitted as per the drawing). Place the plug n° 16 into the right
gulate the screw n° 19 in order to open and close the water in the washbasin. With the nut n° 22 block the screw n° 19.

op-up lever n° 8 into the right hole.

e pop-up lever n° 8 with n° 13, with the junction n° 12. Regulate the pop-up lever n° 8 until when the knob n° 21 will be only few
to the mixer's body. Please check that the pop-up lever n° 13 is completely turned to the floor, then screw the junction n° 12.

o connect the pop-up waste with the siphon. If it is not included in the box, it can be bought separately.
RE E: connect the flexibles B and C with the boiler, as shown in the drawing.

ap M into the flexible A, fit-in the cut washer F, the washer G and the conical gasket H into the cap M. Fit in the pressure's

e flexible A (complete with cap and washers) with the stop-cock with incorporated filter. If it's not included in the box, it can be
aterally
ater's general valve.

13) Take care to disassemble the aerator before proceeding to the seal's test of the mixer. Let flow a good quantity of water to expel the eventual
deposits which otherwise would choke the aerator.

BASIN MIXER WITH EXTRACTIBLE SHOWER-Pictures F, G, D

1) Close the water's general valve.

2) Unscrew the nut n° 11 from the stem n° 4. Place the gasket n° 8 on the stem n° 4

3) Place the mixer into the right hole

4) Place the gasket n° 9 and the inox flange n° 10 on the stem n° 4 and screw the nut n° 11. Please check that's it's well screwed.

5) Fit-in the flexible n° 3 into the body n° 1.

6) Fit-in the plumbert n° 51 into the flexible n° 3 and fix it with the screw n° 50. We suggest maintaining the position as per the drawing.

7) Fit-in the gasket n° 52 into the cap n° 7 and screw the flexible n° 3 into the cap n° 7. We suggest to hold the flexible n° 3 with a key and with
another one to well tighten the cap n° 7 of the pipe n° 53.

8) Fit-in the gasket n° 54 into the connection of the flexible n° 3.

9) Screw the flexibles n° 6 into the pipes n° 5. Please check carefully that all these flexibles are equipped with integral o-rings H.

10) Connect the flexibles n° 6 with the stop-cocks with incorporated filter. If they're not included in the box, they can be bought separately.

11) **SEE PICTURES D and G:** unscrew the waste n° 15 and place the part n° 23 (with the gasket P fitted as per the drawing) into the right hole of
the washbasin (from up). From down screw the part n° 24 (with the gasket O fitted as per the drawing). Place the plug n° 16 into the right
hole and regulate the screw n° 19 in order to open and close the water in the washbasin. With the nut n° 22 block the screw n° 19.

12) Fit-in the pop-up lever n° 8 into the right hole.

13) Connect the pop-up lever n° 8 with n° 13, with the junction n° 12. Regulate the pop-up lever n° 8 until when the knob n° 21 will be only few
mm, distant to the mixer's body. Please check that the pop-up lever n° 13 is completely turned to the floor, then screw the junction n° 12.

14) Take care to connect the pop-up waste with the siphon. If it is not included in the box, it can be bought separately.

15) Open the water's general valve.

16) Take care to disassemble the aerator before proceeding to the seal's test of the mixer. Let flow a good quantity of water to expel the eventual
deposits which otherwise would choke the aerator.

SPECIFICATION

-Flow pressure

Recommended 1-5 BAR

Greater than 6 BAR install a pressure reducer

Maximum temperature of exercise 80° C

Water connections: hot- left / cold - right

REPLACEMENT OF THE CARTRIDGE – Picture H

To replace the cartridge, after having closed the pipes of the water, remove the placket n° 3, unscrew the grain n° 2, remove the lever n° 1,
unscrew the cap n° 4 and the ring nut n° 5 and remove at least the cartridge n° 6. For the assembling proceed inversely checking that the locating
pegs are inserted into the apposite holes and that the washers of the cartridge are perfectly lodged. Screw then the regulation ring nut n° 5 and
adjust it in order to assure the seal and to obtain a soft movement of the lever. We suggest not screwing too much the regulation ring, otherwise
the cartridge will block and not to screw it too softly otherwise the mixer will leak. The exact closing can be obtained applying a force equal to
10 Nm with a torque wrench.

ATTENTION!
WE KINDLY RECOMMEND DRAINING ALL THE PIPES OF THE WATER BEFORE INSTALLING ANY MIXER.
TO CLEAN USE ONLY WATER AND NEUTRAL SOAP AND DRY WITH A SOFT CLOTH.
IT IS ABSOLUTELY UNADVISED THE USE OF DETERGENTS, ABRASIVES OR ANY KIND OF SOAP WHICH COULD SERIOUSLY DAMAGE THE
PROTECTIVE VARNISH. WE DECLINE ALL RESPONSABILITIES DERIVING FROM THE EVENTUAL NONOBSERVANCE OF THE ABOVE MENTIONED
INSTRUCTIONS.

GUARANTEE

On the mixer you bought you will have a 5 years guarantee, from the date of purchase, on material and processing errors.

The guarantee does not cover:

- The wrong and not appropriate use of the mixer

- The wrong installation or installation with non-appropriate instruments.

- The lack or inadequacy during maintenance.

- The improper use of cleaning products.

- The components liable to normal wear (aerators, o-ring, etc.).

- The damages due to limestone or flakes of plaster in the water piping.

- The damages due to the utilisation of not original EMMEVI spare parts.

- The damages due to chemical, electronically, electrical influences.

The carriage of our mixers has a 5 years guarantee, but only if stop-cocks with incorporated filter have been installed.

In case of objection, it is necessary to return the mixer.

- Properly packed

- Supplied with the proof of purchase (invoice, ticket, etc.)

- Check coupon, specifying the type of fault with the product.

Your trader will request the application of the guarantee.

If the fault will result covered by the guarantee, the mixer will be replaced or repaired free.

N.B.: we will not accept purchase returns with non-original check coupons (photocopied, altered, tampered) or without their coupon.

The company EMMEVI has the right to alter or modify this unit if necessary.